

I.C.T Economic SMT Fully automatic Stencil Printer

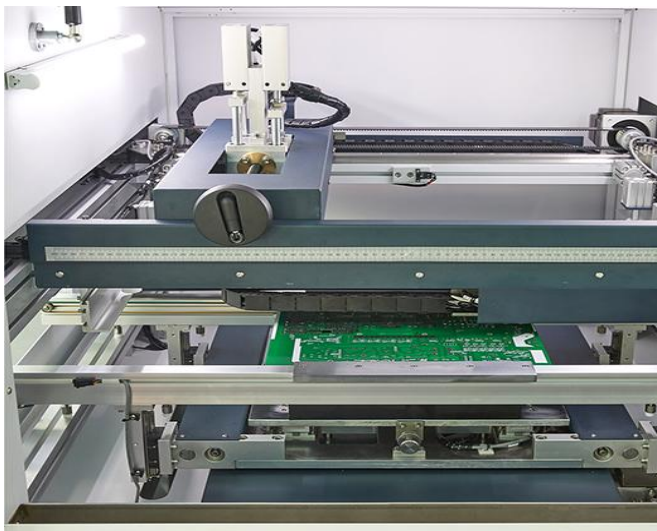


Introduce:

I.C.T economical full-automatic smt printing machine is mainly used for machines provided by customers with commonly product requirements and more appropriate budget. It is mainly used for PCB with commonly precision requirements such as LED.

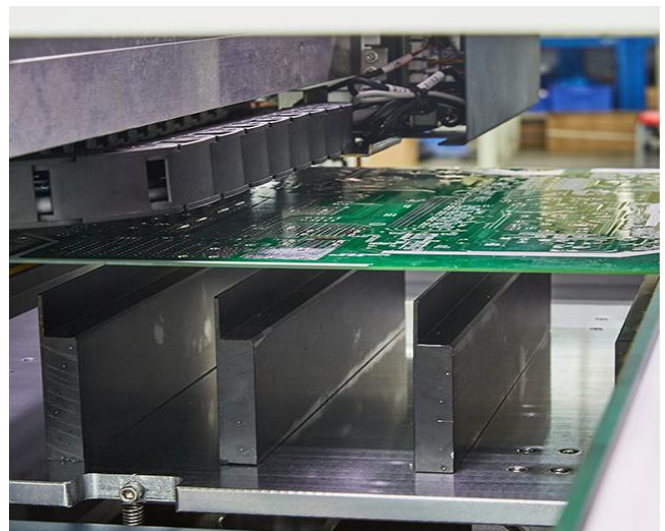
Features:

- 1,High positional accuracy, repeated positioning accuracy $\pm 0.02\text{mm}$; printing accuracy 0.025mm
- 2,Support glue printing, Automatic control improves production efficiency, quality control and saves production cost
- 3, Automatic PCB calibration, Squeegee pressure adjustable, Automatic printing, Automatic stencil cleaning
- 4, Programmable motor controls separation speed and distance among squeegee, stencil and substrate, to realize multi-method separation.
- 5, Multi-functional PCB positioning system for convenient and accurate PCB positioning.
- 6, Programmable PCB lifting platform ensure the PCB to lift to a proper height
- 7, Adopt company independently developed suspended print head with automatic pressure adjustment system.
- 8, Applicable PCB types: LED, Power Supply, vehicle electronics. besides general electronics products.
- 9, SMEMA standard.



Print system

Arch bridge suspension type squeegee structure.
The squeegee is independently controlled to ensure accurate and stable pressure.



Transport system

The unique belt conveyor system can effectively prevent stuck pcb.
The motor controls the speed and the stop position is precise.
PCB entry and exit directions are freely available.



Vision system

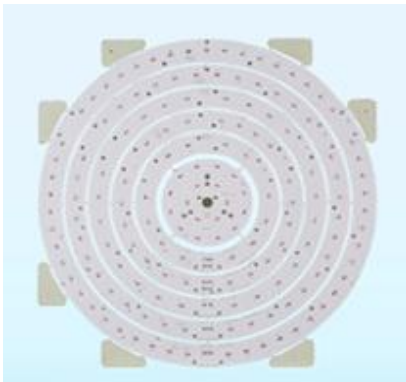
Uniform high brightness coaxial light source. Full range light source adjust can identify various types of Mark. Suitable for tin plating, copper plating, tin spraying, FPC and other PCB.



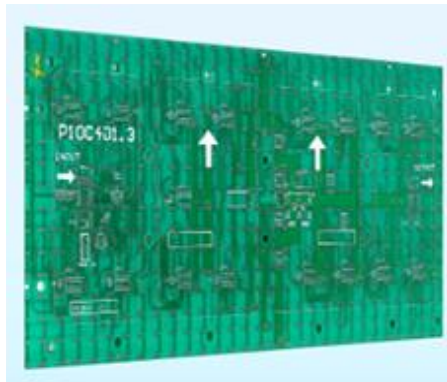
Operat system

Windows 7, Friendly MMI interface, teaching and navigation function. Operation log, fault record analysis and other diagnostic functions. New program is controlled within 5-10 minutes.

Application:



LED



Power



Small electrical

Specification:

Model	I.C.T-SE5040
Frame Size(mm)	470*370 ~ 737*737
PCB Size(mm)	50*50 ~ 500*400
PCB Thickness	0.4~6mm
PCB Warpage	<1%
Transport Height	900±20mm
Transport Direction	Left-Right; Right-Left; Left-Left; Right-Right
Transport Speed	Max 1200mm/s
Support System	Magnetic Pin /support block
Printer Head	Two independent printhead

Squeegee Speed	10~200mm/sec
Squeegee Pressure	0~15kg
Squeegee Angle	60°/55°/45°
Squeegee Type	Stainless steelstandard(plastic is option)
Release Speed	0.1~20mm/sec
Cleaning System	Manual
Table Adjustment	X:±3mm;Y:±7mm;θ:±2°
Repeate Accuracy	±0.02mm
Printing Accuracy	±0.025mm
Cycle Time	<8s
Product Changeover	<5Min
Air Pressure	4.5~6Kg/cm2
Power Supply	AC:220±10%,50/60HZ,3kw
Control Method	PC Control
Dimension(mm)	1200*1200*1450
Weight	Approx:850kg

* The data is obtained under ambient temperature of 25 ℃ and humidity of 60%

Standard Accessories:

1	Metal Squeegee	1 set
2	Operation Software	1 set
3	Pcb Support Pin	15 pcs
4	Pcb Support Block	2 pcs
5	Mixing knife	1 pcs
6	Fuse	1 pcs
7	Relay	2 pcs
8	Manual	1 book
9	Tool Case	1 set

* Attachments may change with product upgrade. If different, please follow the new list.

Thanks for choosing I.C.T.
I.C.T looks forward to win-win cooperation.
Thank you.